

Investment Objective:

The principal objective of the Manchester and London Investment Trust plc ("MNL" or the "Fund") is to achieve capital appreciation.

Fund Information:

Launch date:	January 1972
NAV per share¹:	401.2p
Share last price²:	340.0p
(Premium)/Discount¹:	15.3%
Ongoing Charge (excluding vm fees) ³ :	0.7%
Shares in issue^{1,6}:	40,270,055
Net Assets¹:	£161.6m
Tickers:	MNL LN; MNL.L
ISIN:	GB0002258472
Listed:	London Stock Exchange
Tax Wrapper Friendly:	SIPP, ISA, SSAS
Historic Dividend Yield⁵:	4.1%
Active Share Ratio (vs Benchmark) ² :	105.3%
Active Share Ratio (vs Nasdaq Comp) ² :	84.8%
ESG^{2,4}:	85.6% (Med. 50%)
Benchmark:	MSCI UK IMI Index (GBP)

¹ Calculated by Link Alternative Fund Administrators Ltd ("Link") as at 3 January 2023.

² Source Bloomberg L.P. (inc PORT) as at 3 January 2023.

³ Calculated by Link Alternative Fund Administrators Ltd, as a percentage of average net assets and using expenses, excluding interest costs for the year ended 31 July 2022. Based on the Association of Investment Companies (AIC) methodology for calculating the Ongoing Charge figure. Figure excludes the variable element of the management fee (which may be either positive or negative).

⁴ Sustainalytics Environment Percentile.

⁵ Based on the last 2 semi annual dividends paid by the Fund divided by the MNL share last price as at 3 January 2023.

⁶ Excluding shares held in treasury.

Before making an investment you should ensure that you have read and understood Manchester and London Investment Trust plc's latest Annual Report, KID and Investor Disclosure Document in detail, which can be found on the following website: www.mlcapman.com.

Please ensure you read the Key Risk Considerations section overleaf.

This material is not a solicitation or an offer to invest with Manchester and London Investment Trust plc ("MNL" or the "Fund") or any other security.

Share market conditions are affected by many factors such as: general economic outlook, movement in or outlook on interest rates and inflation rates, currency fluctuations, commodity prices, changes in investor sentiment towards particular market sectors and the demand and supply for capital. As a result, the price of the Ordinary Shares could be highly volatile and can go up or down. **Past performance should not be seen as an indication of future performance.**

The value of investments can go down as well as up and investors may not get back the amount originally invested.

Fund News

Adobe reported Q4 revenue growth (excluding FX) of 14 per cent, with double digit growth in both core segments. The company also guided to a midpoint of 13 per cent ex FX revenue growth for 2023.

During December, we added several new long positions to the portfolio (although many of these we have held in the past) such as Sage Group, Gen Digital, Robo Global Robotics & Automation, Amdocs, NXP Semi, Analog Devices and Match Group. We reduced positions in Amazon, Alphabet and Polar Capital Technology Trust.

Market Update

It was another bad month for Nasdaq investors with the index down ~10% (GBP) for the month. However, this was the month that our long-standing TSLA underweight paid off with the stock down a whopping 36% in the month! Although a relief rally in the stock may be due, we will remain uninvested.

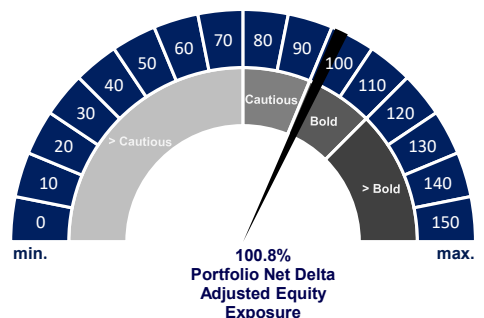
With index targets for the 2023 year-end showing ranges of > 20%, the Era of Volatility is truly upon us. Our largest concern now is a slowdown in cloud computing revenues, a subject on which we provide more detail in our Newsletter. Most commentators see a v-shaped market in 2023 which, non-causally, provides us with some confidence that won't be the outturn. The recession in the USA could come later than expected as the Consumer & Labour markets prove more resilient than anticipated. If the recession gains momentum we could see a very tough outturn in Europe.

Top 20 Equity & Bond Net* Exposures as a percentage of Net Assets

<u>Holding:</u>	<u>Net:*</u>	<u>Net Equity Exposure Breakdown:</u>	<u>Net:*</u>
MICROSOFT CORP	32.7%	Large Cap Equity	95.8%
ASML HOLDING NV	10.4%	Mid Cap Equity	0.0%
CADENCE DESIGN SYS INC	8.0%	Small Cap Equity	0.0%
SYNOPSIS INC	7.9%	Equity Options	6.4%
ADOBE INC	6.1%	Equity ETFs, Funds & Baskets	(1.4)%
NVIDIA CORP	5.3%		
ADVANCED MICRO DEVICES INC	4.9%		
PAYPAL HOLDINGS INC	4.5%		
ALPHABET INC	4.2%		
GODADDY INC	2.7%		
INTUIT INC	2.5%		
AMAZON.COM INC	1.7%		
NETFLIX INC	1.6%		
INTUITIVE SURGICAL INC	1.5%		
ANSYS INC	1.4%		
ORACLE CORP	1.1%		
AMDOCS LTD	1.1%		
S&P REGIONAL BANKING ETF	(1.1)%		
INVESCO KBW BANK ETF	(1.1)%		
QQQ NASDAQ 100 ETF	(1.0)%		

*Net = Exposure on a marked-to-market basis combined with the delta adjusted exposure of options (as defined in the Fund Investor Disclosure Document). Ranked on a modulus basis.

Current Total Net Equity Exposure:



For further info on delta adjusted exposure please see fund FAQs: <https://mlcapman.com/faq/>

Manchester and London Investment Trust plc
Fact Sheet December 2022

Issued by:
M&L Capital Management Ltd ("MLCM") who are authorised and regulated by the Financial Conduct Authority under Firm Reference Number 672181.

Registered Office of MLCM:
12a Princes Gate Mews, London, SW7 2PS.
Registered in England & Wales: 04089418

Enquiries:
Website: www.mlcapman.com
E-mail: ir@mlcapman.com

Registered Office of MNL:
12a Princes Gate Mews, London, SW7 2PS.
Registered in England & Wales: 01009550

Certificates, Dividends and Other Shareholding Enquiries :

Link Group,
10th Floor,
Central Square,
29 Wellington Street,
Leeds,
LS1 4DL.

Tel: 0871 664 0300
E-mail: enquiries@linkgroup.co.uk

Key Risk Considerations - Capital At Risk

MLCM has not taken any steps to verify the adequacy, accuracy or completeness of any information.

MLCM, MNL nor any of their respective affiliates, officers, directors, agents and employees make any warranty, expressed or implied, of any kind whatsoever, and none of these parties shall be liable for any losses, damages, costs or expenses, of every kind and description, relating to the adequacy, accuracy or completeness of any information in this document or the use of this information. As with all historical performance data, it may not be used to predict future characteristics or performance relied on in making any investment decisions.

The value of investments can go down as well as up and investors may not get back the amount originally invested.

Holdings in overseas investments are subject to changes in currency exchange rates, which may cause the value of such investments to go down as well as up.

Gearing, sometimes referred to as leverage, can be used by the Fund to borrow to gain additional exposure to investments. Gearing works by magnifying the performance, this can result in either greater losses or profit had the Fund not used Gearing.

Derivatives can be utilised by the Fund, these instruments also give rise to leverage without the need to borrow. Derivatives may in addition also give rise to counterparty risk, the risk the issuer of the derivative cannot fulfil its obligations (profit that maybe due to the Fund).

For a full list of risks and definitions of the portfolio risk statistics provided please refer to the Investment Disclosure Document and KID at www.mlcapman.com.

Past performance is not a reliable indicator of current or future results.

Notes for Risk Management & Valuation Metrics:
¹Source: Bloomberg L.P. (inc PORT) as at 3 January 2023.

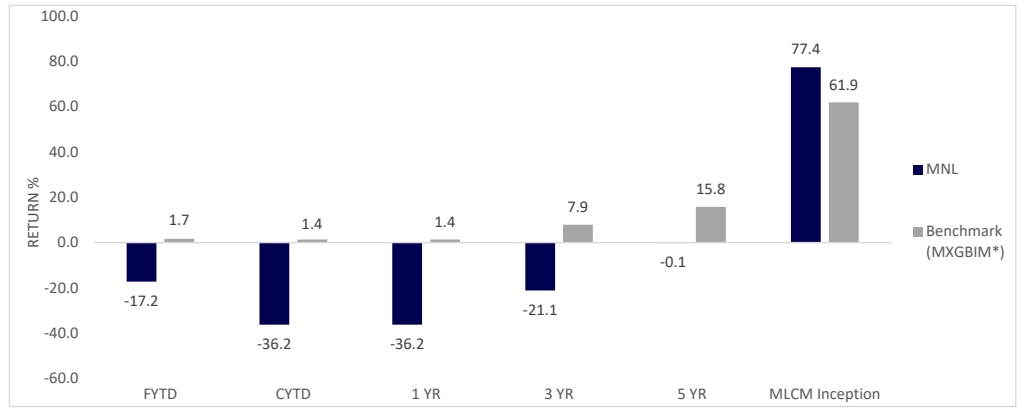
²As defined by the Alternative Investment Fund Managers Directive (as implemented in the UK on 22 July 2013), calculated using data from Bloomberg PORT and Link.

³Portfolio and Benchmark volatility are calculated using the Bloomberg Risk Model on underlying security returns, annualised, in base currency (GBP).

⁴Forward 12m.

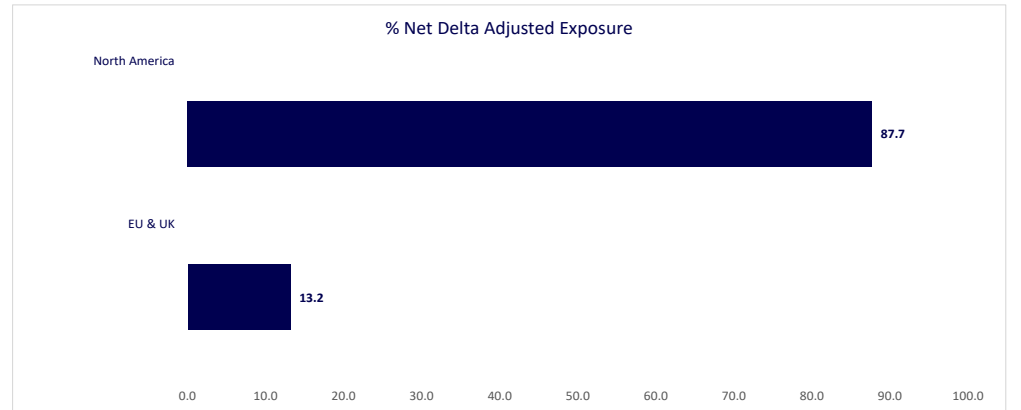
⁵Historic weekly Correlation over 5yrs in GBP using MNL share price. Nasdaq = Nasdaq Composite Index.

⁶Estimated weighted average sales exposure to China & Taiwan. Where sales exposure to these countries has not been disclosed by our holdings, broker estimated ranges or other subjective measures have had to be used instead. Therefore, there is a high degree of subjectivity within this figure and it should only be viewed as a rough guide.



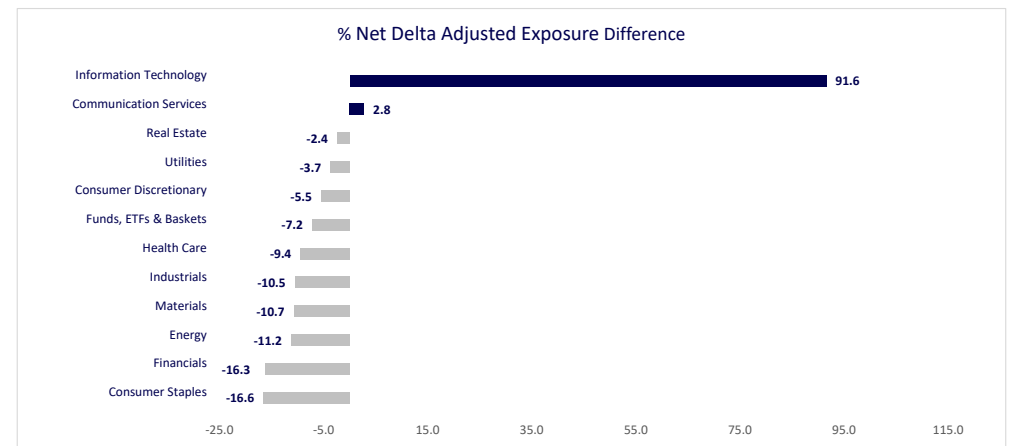
Data as at 3 January 2023. This comparison is illustrative only. Return figures are sourced from Bloomberg L.P. NAV return is on a total return basis (dividends reinvested), net of all costs incurred. Fund NAV is calculated weekly by Link Alternative Fund Administrators Ltd ("Link"). Calculation time periods depend on the timing of NAV releases and so may differ slightly to the axis labels. The figures shown relate to past performance. FYTD is from the end of July 2022. MLCM Inception time period is performance since 22/09/2015. *MSCI UK IMI Index (GBP).

Domicile of Net Equity Exposures (Source: Bloomberg PORT, Link, MNL)



Data as at 3 January 2023

Sector Weightings of Net Equity Exposures v Benchmark (Source: Bloomberg PORT, Link, MNL)

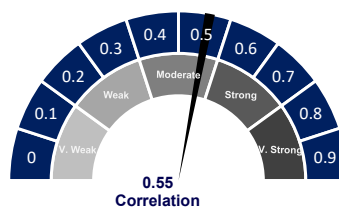


Data as at 3 January 2023

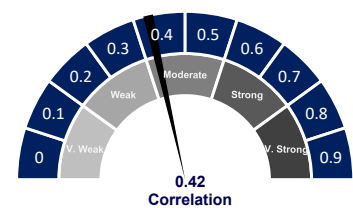
Risk Management & Valuation Metrics (Source: Bloomberg L.P. (inc PORT), Link)

1yr Share Price volatility ¹ :	39.9%	AIFMD Leverage ² - Commitment:	138.5%
Portfolio volatility ^{1,3} :	25.7%	See through P/E ^{1,4} :	23.5x
Benchmark volatility ^{1,3} :	14.5%	See through EV/EBITDA ^{1,4} :	13.9x
AIFMD Leverage ² - Gross:	139.9%	China & Taiwan est. Sales exp. ⁶ :	17.6%

5yr Historic Correlation^{1,6} - MNL vs Nasdaq



5yr Historic Correlation^{1,6} - MNL vs Benchmark



PRIIPS Summary Risk Indicator ('SRI')

1 2 3 4 5 6 7

The Fund is categorised as a 5 on the SRI scale, which is a "medium-high" risk class. This is calculated on past performance data using the prescribed PRIIPS methodology and actual risk may vary significantly. For further information on SRI - including key risk disclaimers - please read the Fund Key Information Document available at www.mlcapman.com.